

The background of the slide is a large architectural rendering of the Middleton Grange Town Centre Project. On the left, a tall, curved residential building with multiple levels of green balconies is visible. In the center, a blue semi-transparent box contains the text. On the right, a colorful children's playground with a red safety mat and various play structures is shown. The sky is blue with some clouds and birds.

MIDDLETON GRANGE

Town Centre Project

KEY HIGHLIGHTS

- 2 minutes to the M7 motorway entrance.
- 7 km to the new Badgerys Creek International Airport.
- 10 minutes to Leppington Train Station
- 15 minutes to Liverpool CBD and Westfield
- 20 minutes from Camden. Recent statistics prove a large influx of population moving to South West Sydney i.e. Middleton Grange, Austral, Leppington, Gregory Hills etc
- 900 Residential Dwellings & over 20,000 sqm Commercial & Mix use
- Total Construction cost \$700mill AUD



The Middleton Grange Town Centre forms the focal point of the new and fast-growing community at Middleton Grange. It is 7km to the west of the Liverpool Metropolitan Cluster, 5km north of the Leppington strategic and transit-oriented centre, and 7km from the new Western Sydney Aerotropolis.

The Middleton Grange Town is also 2 minutes away from the M7 Motorway connecting the area to the Western Economic Corridor, and 1 minute away from the new Fifteenth Avenue rapid transit route, that will connect Liverpool City Centre to the new Western Sydney Aerotropolis.

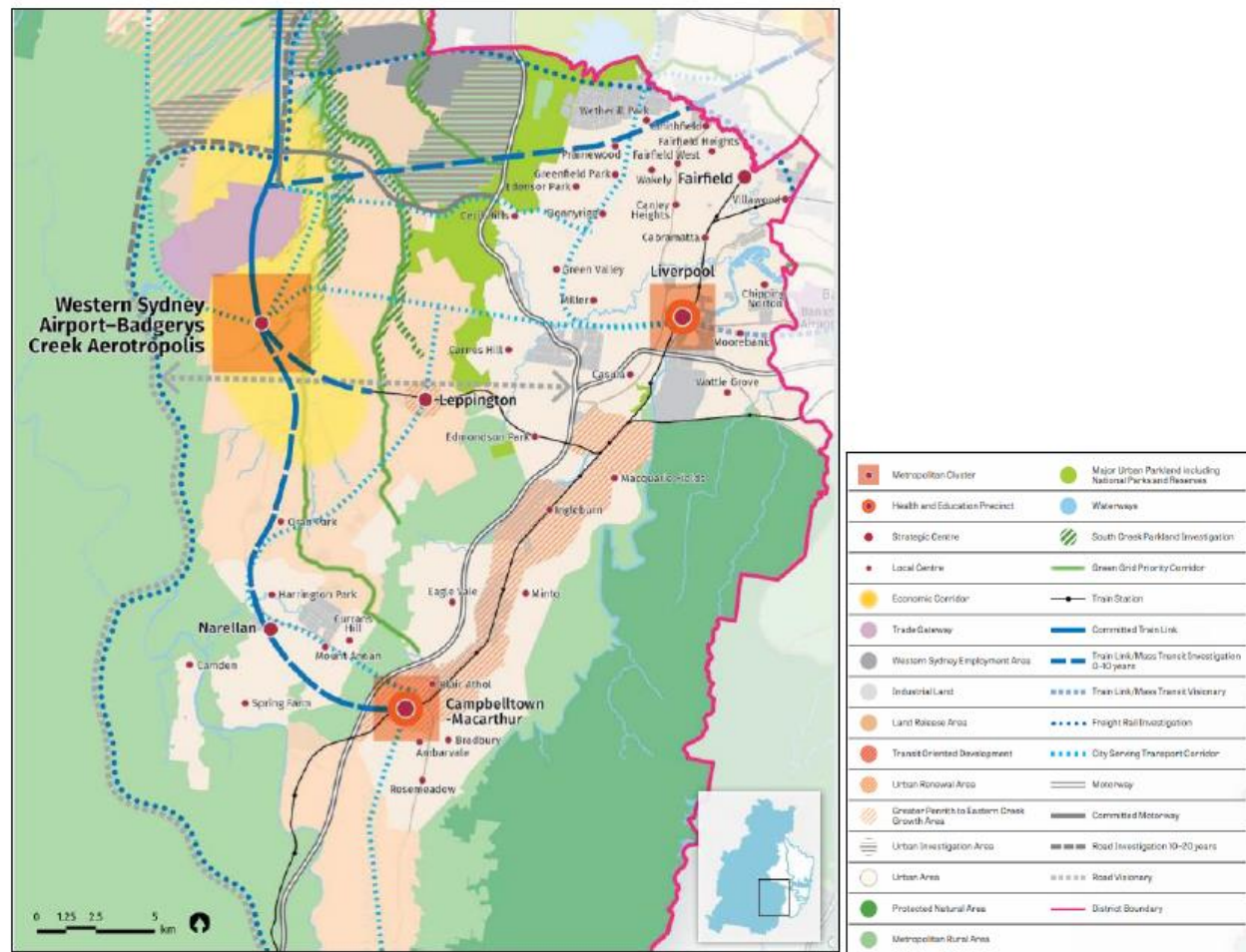


Figure 25: Western City District Structure Plan

WESTERN CITY DISTRICT PLAN

Greater Sydney's three cities identified in the Greater Sydney Region Plan – A Metropolis of Three Cities reach across five districts. The Western City District is framed by the region's Protected Natural Area and Metropolitan Rural Area and incorporates the local government areas of Blue Mountains; Hawkesbury; Penrith; Camden; Campbelltown' Fairfield' Liverpool' and Wollondilly. It's primary focus is the Western Parkland City.

The Western City District Plan was released in March 2018 to set the priorities and actions for improving the quality of life for the residents as the district grows and changes.

"The vision for Greater Sydney as a metropolis of three cities means residents in the Western City District will have quicker and easier access to a wider range of jobs, housing and activities. The vision will improve the District's lifestyle and environmental assets".